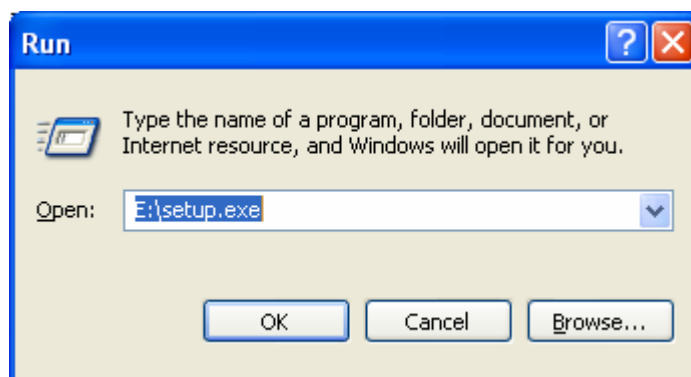


Getting Started with the MiniLab E100 and eBench Software

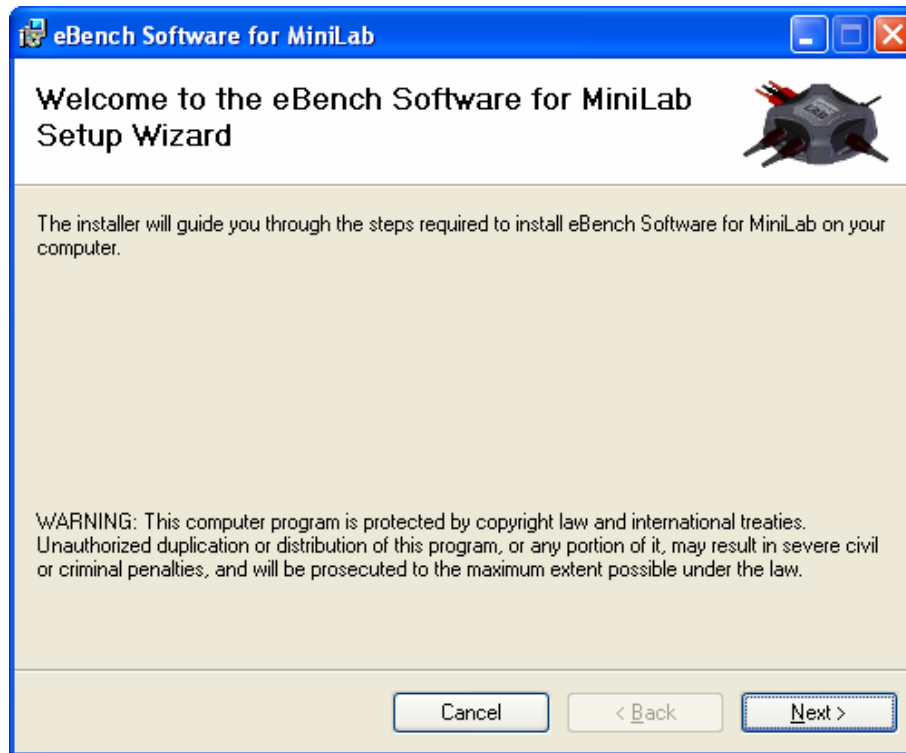
This guide will show you how to install the eBench software and begin using the MiniLab E100. You should close all other applications before installing the eBench software.

IMPORTANT! Do not connect the MiniLab to your system until the eBench Software has been installed.

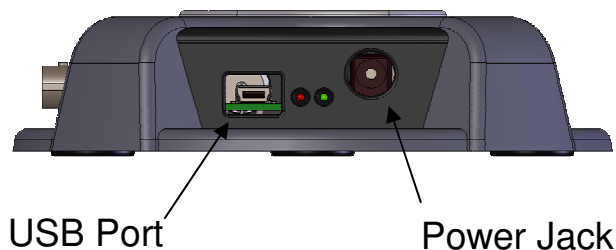
1. Your MiniLab kit contains an eBench installation disk. You should insert the disk into your CD-ROM drive. If the setup program does not start automatically, you can start the setup program by going to the Windows Start menu and selecting Run... Enter the following. (Note: If your system uses a different letter than "E" for your CD-ROM drive, you will need to substitute that drive letter.)



2. Once the installation begins, follow the instructions on the screen.



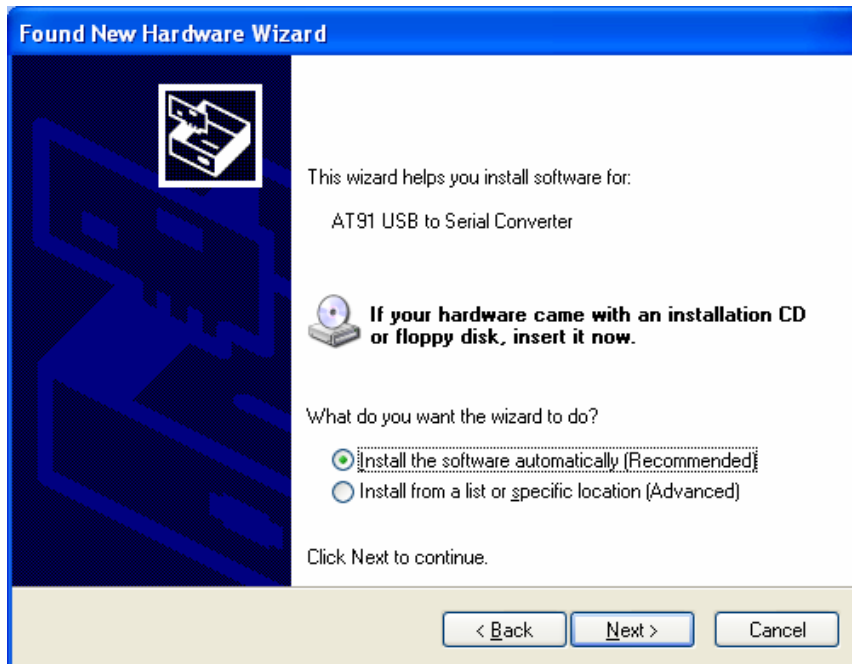
3. Apply power to your MiniLab. The power supply in your kit plugs into a standard 110V AC socket. Insert the power supply barrel connector into your MiniLab's power jack.



4. Connect the MiniLab to your system using the supplied USB cable.
5. The Hardware Installation Wizard will automatically run. To speed up the installation, do not connect to Windows Update.



6. When prompted, select “Install the software automatically.”



7. The Hardware Installation wizard will warn you that the software has not passed Windows Logo testing. This is a normal occurrence. Select “Continue Anyway.”

Getting Started with the MiniLab E100 and eBench Software



8. During installation, an “eBench for MiniLab” shortcut was added to your Windows Desktop. An entry for “eBench for MiniLab” was also placed in your Start/All Programs menu. Using either of these options, start the eBench software.
9. The eBench main screen will appear and show the MiniLab is disconnected.



10. After a few seconds the eBench will establish communications with the MiniLab and the connection status of the MiniLab will be indicated on the main screen.



11. Now you are ready to use the MiniLab’s tools. Just select the desired tool by clicking on the associated icon on the main screen:



Oscilloscope – Opens the Oscilloscope window, or recalls the window if it is already open, and sets the Oscilloscope as the active window.



Function Generator – Opens the Function Generator window, or recalls the window if it is already open, and sets the Function Generator as the active window.



Multimeter – Opens the DMM window, or recalls the window if it is already open, and sets the DMM as the active window.